



Wellington Parade, Kingsdown, Deal



Victory House
144 Wellington Parade
Kingsdown
Deal
Kent
CT14 8AF



Description

Ground Floor

- Porch
- Living Room
19'0 x 18'2
(5.79m x 5.54m)
- Kitchen
11'7 x 8'6
(3.53m x 2.59m)
- Bedroom
10'5 x 8'0
(3.18m x 2.44m)
- W.C

First Floor

- Landing
- Bedroom/Dining Room
12'3 x 11'4
(3.73m x 3.45m)
- Bedroom
19'6 x 8'1
(5.94m x 2.46m)
- En-suite Shower Room
- Bath & Shower Room

Property

Victory Cottage is a beautiful cottage located on the rarely available Wellington Parade, Kingsdown, parallel to the sea. This home would make an ideal investment or holiday home as well as someone's new seaside home.

The property has a quirky layout whilst still offering the necessities such as a living room, downstairs WC, kitchen, three bedrooms, one currently set up as a dining room making the most of the view and a main bathroom. One of the bedrooms also benefits from en-suite facilities. There is a spacious cellar providing extra storage as well as electricity. It also has outside space with a good sized shed, off-street parking and fantastic uninterrupted sea views. Whilst the current owners have made modern updates, there is still plenty of original character throughout including wooden beams and an open fireplace in the cosy lounge.

Wellington Parade is a straight short walk from Walmer and Deal and is just a short way from local village amenities and popular pubs. Deal is a town situated eight miles North-east of Dover and eight miles South of Ramsgate with its quaint streets and houses, award-winning High Street, high-speed train links to St Pancras and independent shops. An array of cafes and pubs sit along the picturesque seafront that is home to a sweeping pier.



Our Time Here

The seaside setting of Victory Cottage is amazing, it is as close as you could want to live to the sea, with stunning ever-changing views. The village is ideal, we have three pubs, a small shop and post office all on the doorstep. Deal is within walking distance, with a wide-range of amenities and transport links. On a fine day you can see France and the nearby cross Channel links are great for accessing the continent.

The cottage was part of a pub until the 1950s, originally called 'The Conqueror' before being changed to 'The Victory', which is where its name originates from. It has been in our family for around 50 years and has not been on the market during that time. The cottage has a lovely, unique character, with beams in the living room and an open fire, which is perfect in the winter.

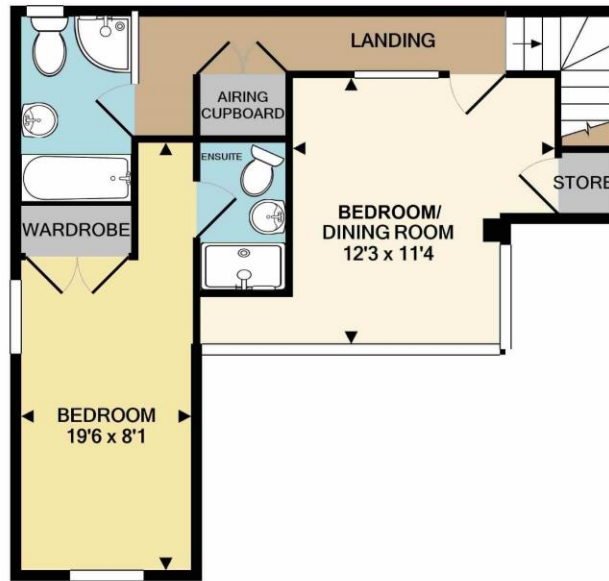
We love to sit and take in the views from our sun room, it has huge windows and is the best place to spend time if you are not outside. The cottage has plenty of versatile space, with one bedroom downstairs and two upstairs, we have easily hosted eight people to stay and everything is easy to maintain.

The cottage was completely renovated eight years ago as we originally intended to live here permanently, but we have used it as our holiday home. It will be a wrench to sell as we have enjoyed Victory Cottage through generations of our family.





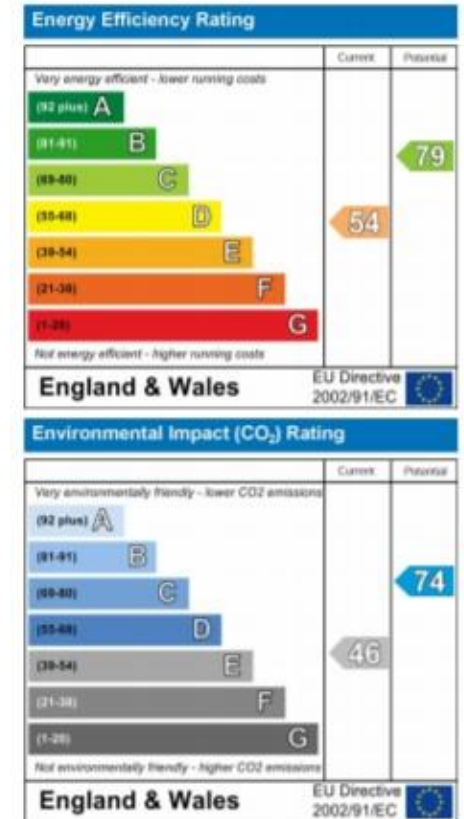
GROUND FLOOR
APPROX. FLOOR
AREA 517 SQ.FT.
(48.1 SQ.M.)



1ST FLOOR
APPROX. FLOOR
AREA 458 SQ.FT.
(42.5 SQ.M.)

TOTAL APPROX. FLOOR AREA 975 SQ.FT. (90.6 SQ.M.)

Whilst every attempt has been made to ensure the accuracy of the floor plan contained here, measurements of doors, windows, rooms and any other items are approximate and no responsibility is taken for any error, omission, or mis-statement. This plan is for illustrative purposes only and should be used as such by any prospective purchaser. The services, systems and appliances shown have not been tested and no guarantee as to their operability or efficiency can be given
Made with Metropix ©2019



14 Lower Chantry Lane, Canterbury, Kent CT1 1UF
Tel: 01227 200600
 Email: exclusive@milesandbarr.co.uk

In Compliance with the Consumer Protection from Unfair Trading Regulations 2008 we have prepared these sales particulars as a general guide to give a broad description of the property. They are not intended to constitute part of an offer or contract. We have not carried out a structural survey and the services, appliances and specific fittings have not been tested. All photographs, measurements, floorplans and distances referred to are given as a guide and should not be relied upon for the purchase of carpets or any other fixtures or fittings. Lease details, service charges and ground rent (where applicable) are given as a guide only and should be checked and confirmed by your Solicitor prior to exchange of contracts. For Referral Fee Disclosure please visit: www.milesandbarr.co.uk/referral-fee-disclosure